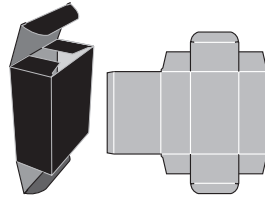
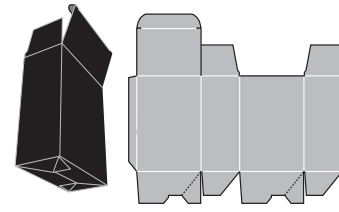


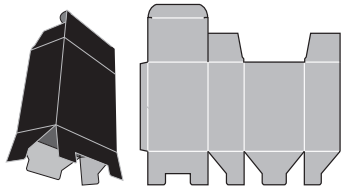
RTE (Reverse Tuck End) - This is an economical choice. RTE nests better than STE. Tucks may have either friction fit or slit locks for a more secure closure. Tucks can be on panel two (French Tuck) or panel four (Standard Tuck), depending on presentation preference.



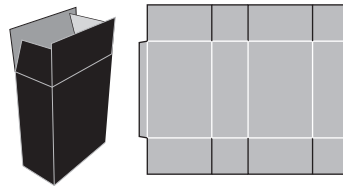
STE (Straight Tuck End) - Although not as economical as the RTE, aesthetically this style works better. Tucks may have either friction fit or slit locks for a more secure closure. Tucks can be on panel two (French Tuck) or panel four (Standard Tuck), depending on presentation preference.



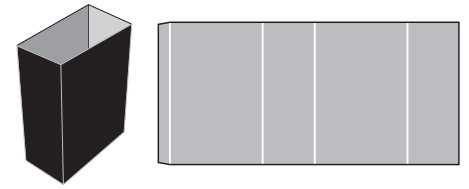
TTAB (Tuck Top Auto. Bottom) - This profile is used to reduce assembly labor. The Tuck Top has a glued bottom and is the most secure bottom. Tucks may have either friction fit or slit locks for a more secure closure. Tucks can be on panel two (French Tuck) or panel four (Standard Tuck), depending on presentation preference.



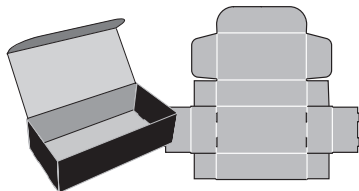
TTSLB (Tuck Top Snap Lock Bottom) - This carton is a more secure carton than the STE and RTE. Requires a little more labor. Tucks may have either friction fit or slit locks for a more secure closure. Tucks can be on panel two (French Tuck) or panel four (Standard Tuck), depending on presentation preference.



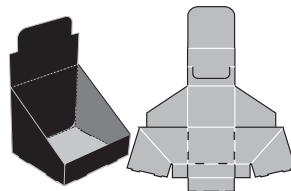
Seal End - This style is usually used for high production runs on automatic cartoning machines. There are various profiles, depending on the specifications for individual cartoning machines as well as maximum layout efficiency. Consult the cartoning machine manufacturer for more information.



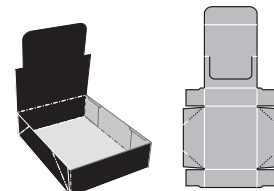
Open End Glued Sleeve - This style is used as a decorative cover on corrugated cartons, foam trays, rigid products and folding cartons. With modifications, it is also used for food and beverage containers (cans, bottles, etc.).



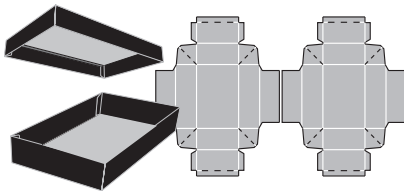
RETT (Roll End Top Tuck) - This very sturdy box sets up easily without needing to be glued. When the sides are manually rolled over, the box locks into place. This is a non-glued carton.



RETT Display (Roll End Top Tuck Display) - This very sturdy box sets up easily without needing to be glued. When the sides are manually rolled over, the box locks into place. The tuck can then be folded into a display. This is a non-glued carton.



4 Corner Beers Display - This tray is glued and the easiest of all the trays for the user to assemble. The tray may be used as a two-piece carton, or as a tray with an attached lid that can be folded into a display. This style is used mostly in the bakery and garment industries. Another version is a Six Corner Beers.



Kwikset Tray - This style is also called a Simplex Style Tray. The carton can be used as a single tray or as a two-piece carton (Telescoping Box). The Kwikset Tray has glued rolover sidewalls, which make it the most aesthetically pleasing and durable of all the trays. Some assembly is required.

Stocks

- SBS** - (Solid Bleached Sulfate): High quality board, excellent strength and printability, white on both sides.
- CCKB** - (Clay Coated Kraft Back): Heavy duty board, white on top, brown on back.
- CCNB** - (Clay Coated News Back): Less strength than CCKB, white on top and gray to brown on back.
- KRAFT** - Very strong board, brown on both sides.
- BENDING CHIP** - Less strength than Kraft, generally tan to brown throughout, very economical.